

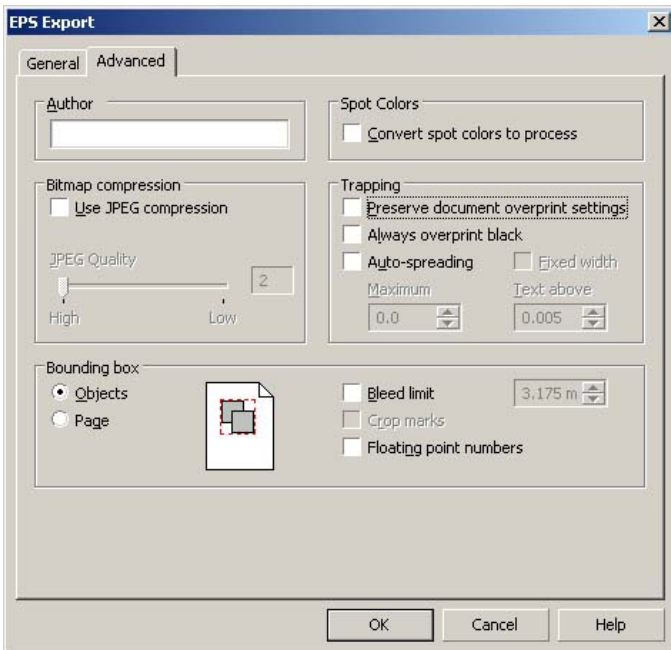
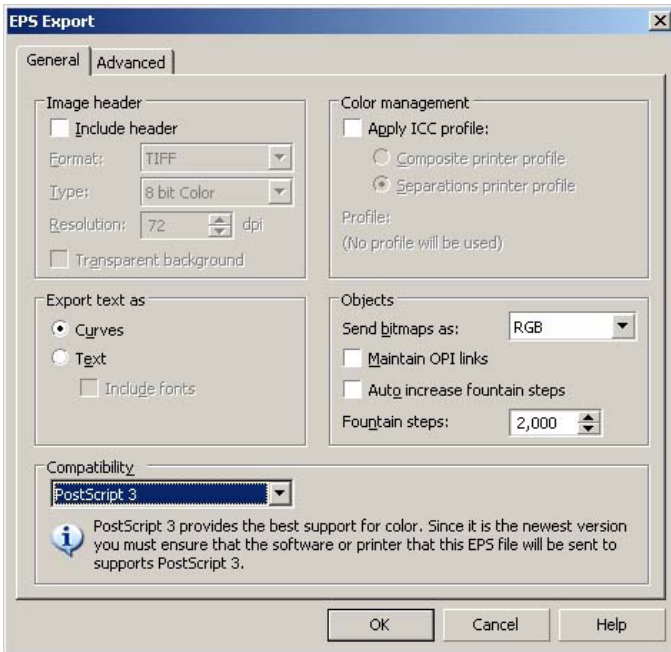
## How do I stop my cutline from disappearing in VersaWorks?

Versaworks needs the spot colours to be defined in the file you open to be able to cut.

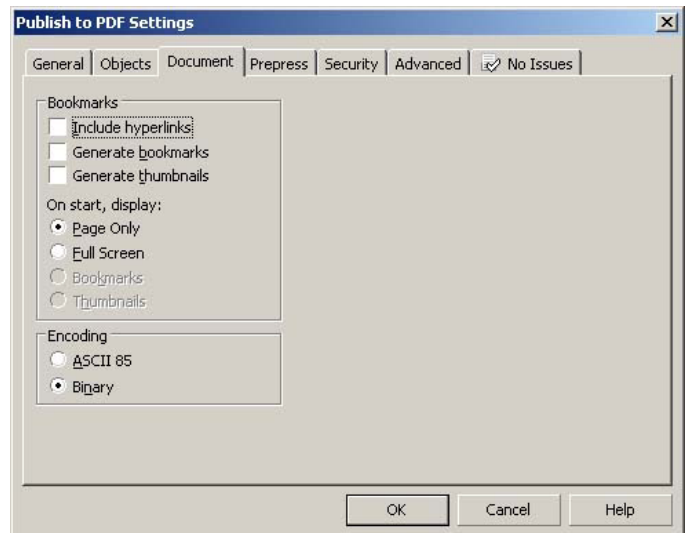
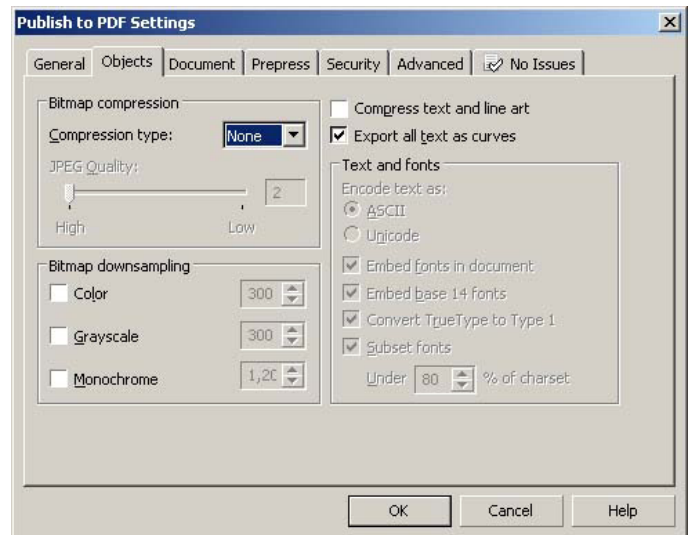
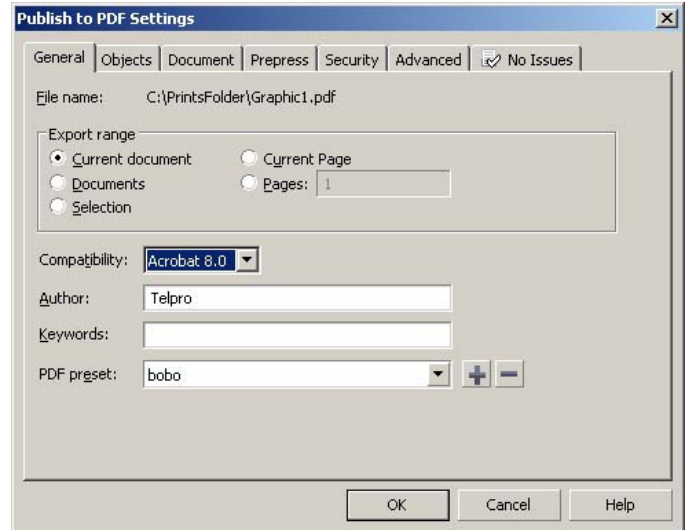
Make sure you always export with spot colour's on and never convert spot colours to process colours.

Please see below for EPS & PDF settings screen shots:

### EPS SETTINGS:



### PDF SETTINGS:



... PDF screen shots continues on next page

